

The sources of drinking water, both tap water and bottled water, include rivers, lakes, streams, ponds, reservoirs, springs, and wells. As water travels over the surface of the land or through the ground, it dissolves naturally-occurring minerals and, in some cases, radioactive material, and can pick up substances resulting from the presence of animals or from human activity.

Contaminants that may be present in source water include

- (A) Microbial contaminants, such as viruses and bacteria, which may come from sewage treatment plants, septic systems, agricultural livestock operations and wildlife;
- (B) Inorganic contaminants, such as salts and metals, which can be naturally-occurring or result from urban storm water runoff, industrial or domestic wastewater discharges, oil and gas production, mining, or farming;
- (C) Pesticides and herbicides, which may come from a variety of sources such as agriculture, urban storm water runoff, and residential uses;
- (D) Organic chemical contaminants, including synthetic and volatile organic chemicals, which are by-products of industrial processes and petroleum production, and can also come from gas stations, urban storm water runoff, and septic systems;
- (E) Radioactive contaminants, which can be naturally-occurring or be the result of oil and gas production and mining activities.

In order to ensure that tap water is safe to drink, EPA prescribes regulations which limit the amount of certain contaminants in water provided by public water systems. FDA regulations establish limits for contaminants in bottled water which must provide the same protection for public health.

The Village of North Lewisburg routinely monitors for contaminants in your drinking water according to Federal and State laws. The following table shows the results of our monitoring for the period of January 1<sup>st</sup> to December 31<sup>st</sup>, 2008. All drinking water, including bottled drinking water, may be reasonably expected to contain at least small amounts of some contaminants. It's important to remember that the presence of these contaminants does not necessarily pose a health risk.

Some people may be more vulnerable to contaminants in drinking water than the general population. Immuno-compromised persons such as persons with cancer undergoing chemotherapy, persons who have undergone organ transplants, people with HIV/AIDS or other immune system disorders, some elderly, and infants can be particularly at risk from infections. These people should seek advice about drinking water from their health care providers. EPA/CDC guidelines on appropriate means to lessen the risk of infection by cryptosporidium and other microbiological contaminants are available from the safe drinking Water Hotline (800-426-4791).

**EPA SAFE DRINKING WATER  
HOTLINE  
1-800-426-4791  
For any questions dealing with  
water quality**

| Contaminants                                   | MCLG        | MCL         | Level Found | Range of Detection | Violation | Sample Year | Typical Source of Contaminants  |
|--|-------------|-------------|-------------|--------------------|-----------|-------------|---|
| <b>Inorganics</b>                              |             |             |             |                    |           |             |   |
| Lead   | 0.0150 mg/l | 0.0150 mg/l | 0.006 mg/l  | N/A                | No        | 2008        | Erosion of household plumbing and natural deposits.                   |
| Copper   | 1.3 ppm     | AL-1.3 ppm  | 1.216 ppm   | <50 to 1770 ug/l   | No        | 2008        |   |
| <b>Organic Disinfection Byproducts (DBP's)</b> |             |             |             |                    |           |             |   |
| Total Trihalomethanes (TTHM's)                 | N/A         | 80 ppb      | 8.1 ppb     | N/A                | No        | 2008        | Byproduct of water disinfection.                                      |
| Five Haloacetic Acids (HAA5)                   | N/A         | 60 ppb      | < 7 ppb     | N/A                | No        | 2008        |   |
| <b>Volatile Organic Chemicals (VOC's)</b>      |             |             |             |                    |           |             |   |
| 1,2- Dichlorobenzene                           | 70 ppb      | 70 ppb      | < 0.5 ppb   | N/A                | No        | 2008        | Discharge from petroleum factories; discharge from chemical factories |
| Xylenes  | 10 ppm      | 10 ppm      | < 1.5 ppb   | N/A                | No        | 2008        |   |

**Maximum contaminant Level (MCL):** The level of a contaminant in drinking water below, which there is no known or expected risk to health. MCLGs allow for a margin of safety.

**Parts per Million (ppm) or Milligrams per Liter (mg/L):** Units of measure for a concentration of a contaminant. A part per million corresponds to one second in a little over 11.5 days.

**Parts per Billion (ppb) or Micrograms per Liter (ug/L):** Units of measure for concentration of a contaminant. A part per billion corresponds to one second in 31.7 years.

**Action Level (AL):** The concentration of a contaminant which, if exceeded, triggers treatment or other requirements which a water system must follow.

The "<" symbol: A symbol which means less than. A result of <5 means that the lowest level that could be detected was 5 and the contaminant in that sample was not detected.

We hope to continue promoting conservation of water so that we can prolong the life of our current well field and use our water resource as responsibly as we can. With the addition of water meters, we saw a 25% reduction in water use. If you have any questions about your water bill, please contact the Village at 747-3645.

**Moderate Susceptibility PWS:**  
The aquifer that supplies drinking water to the Village of North Lewisburg has a moderate susceptibility to contamination, due to the moderate sensitivity of the aquifer in which the drinking water well is located and the existence of potential contaminant sources within the protection zone. This does not mean that this well field will become contaminated, only that conditions are such that the ground water could be impacted by potential contaminant sources. Future contamination may be avoided by implementing protective measures. More information is available by calling 1-937-747-3645

# Village of North Lewisburg

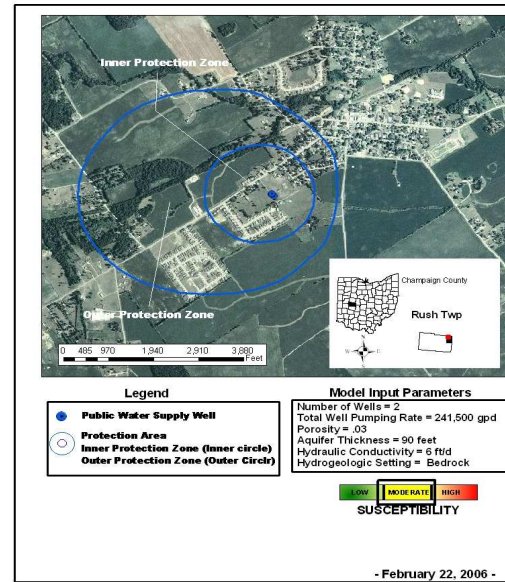


Figure 1. Drinking Water Source Protection Area  
 Village of North Lewisburg Public Water System Identification Number 1100812

## Annual Drinking Water Quality Report For 2008

We are pleased to present to you this year's Annual Drinking Water Quality Report. This report is designed to inform you about the quality water and services we deliver to you every day. Our constant goal is to provide you with a safe and dependable supply of drinking water. We want you to understand the efforts we make to continually improve the water treatment process and protect our water resources. We are committed to ensuring the quality of our water.

Our water source is two wells located adjacent to the existing water treatment plant off of S.R. 245. This report shows our water quality and explains what it means.

Also the Village has implemented a Well Head Protection Plan. This is a plan required by the OEPA to help protect our well field and a plan on how to address potential contaminants that may ultimately harm our drinking water source. It is important that residents are aware of the effects of potential sources of pollution such as oils, fertilizers, pesticides, and antifreeze.

If you have any questions about this report or concerning your water utility, please contact Andy Yoder, Village Administrator, at (937) 747-3645. You can participate in decisions regarding your water by attending a Council meeting. The Council meets on the 1<sup>st</sup> Tuesday of each month at 7:00 p.m. at 60 East Maple Street. Your input is always welcome.

### North Lewisburg Facts

- Serving 1850 people
- Pumped 70.1 million gallons in 2008
- Pumped 192,000 gallons per day
- Water plant built in 1997

### CONSERVATION CORNER

- Only 1% of the earth's water can be used for drinking
- Turn off tap while brushing your teeth and shaving
- Water your lawn in the cooler part of the day